

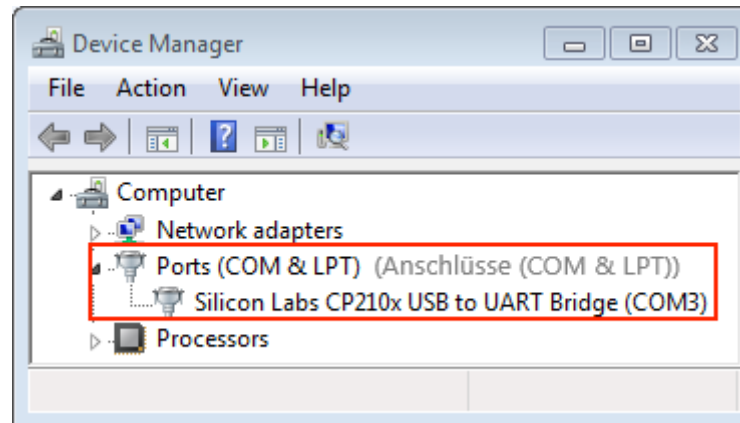
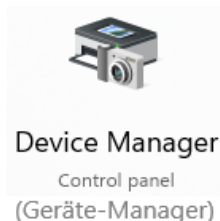
Initial Start-up

Embedded Software

Wolfgang Neff

Assignment 1

- Put your ESP32 into Operation
 - Proceed as follows:
 - Find the number the number of your COM port by means of device Manager.
 - Install, if necessary, the appropriate device driver.



Assignment 1

- Put your ESP32 into Operation [\(continued\)](#)
 - Proceed as follows :
 - Upload the test program to your ESP32.
 - Check the output by means of the serial monitor.

